

# *Innovative pastor to leave next month*

By TONY PAVONE  
Staff Writer

LITCHFIELD — The Rev. Richard Nolan, who brought television cameras to church, will step down as pastor of St. Paul's Episcopal Church in Bantam after 14 years in the position.

He said Tuesday he will devote more time to his career as an educator, but will not assume another role in parish ministry. The resignation is effective with his Sunday service Feb. 28.

The Rev. Mr. Nolan, 50, is a tenured professor of philosophy at Mattatuck Community College in Waterbury and president of The Litchfield Institute, which seeks to promote the arts and sciences, and encourage service to civic, educational and religious groups.

The announcement comes on the heels of the Rev. Mr. Nolan's success in bringing St. Paul's services to shut-ins through live telecasts on cable TV.

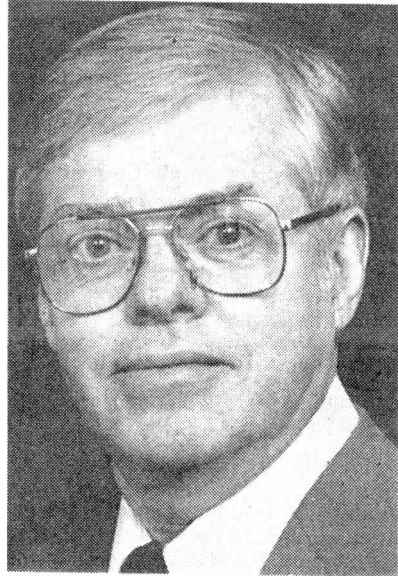
Laurel Cablevision began carrying the Sunday services on Cable 5, its public access channel, two weeks ago. Plans call for the Litchfield Institute, a non-profit secular group based at the church, to expand TV offerings to include concerts and other cultural activities taking place at the church.

Upon the pastor's departure, Bishop Clarence Coleridge will appoint an interim replacement for about six months, and the 12-member church vestry, collaborating with the bishop, will begin a search for a permanent replacement.

The Rev. Mr. Nolan said the selection process includes a self-study of the parish to determine its needs and the qualities a new pastor should be able to offer. "The parish is ready for contributions that I'm not able to make," he said. Questions that should be addressed, he said, include whether St. Paul's is ready for a woman as pastor. "I believe it is ready," he added.

The Rev. Mr. Nolan said his decision came "after much soul-searching, vacillation and reflection. During these years, St. Paul's has been a center of my life personally and vocationally." St. Paul's was the first parish at which he served as pastor.

Reviewing the state of the parish, he wrote in letters sent to each par-



---

*'St. Paul's has been  
a center of my life  
personally and  
vocationally.'*  
— Rev. Richard Nolan

---

ishioner, "St. Paul's Church is strong and vital; lay and ordained ministries are in place effectively; the televising of services for the homebound has begun; the building and grounds are in fine condition; finances are sound; and the parish policy manual is a solid guide for the immediate future."

The Rev. Mr. Nolan also serves as "associate in continuing education" in the Berkeley Divinity School at Yale University and is preparing a ninth edition of a philosophy textbook he helped write.

Realling that he recently performed a marriage for a couple who were only youngsters when his pastorate began, the Rev. Mr. Nolan reflected that "the incredible sense of family and warmth I've been able to share will be memories I'll never forget." He added with a laugh, "And it also makes me aware of my age."